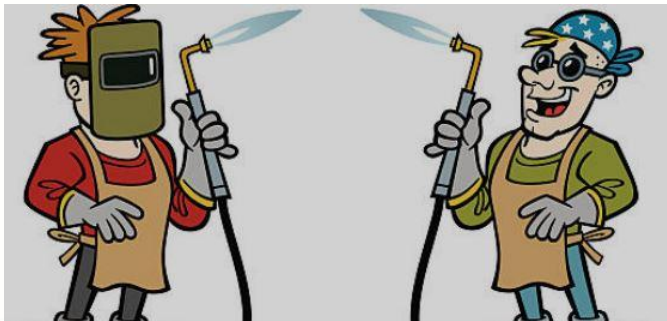


Global Shortage of Qualified Welders i.e. SMR

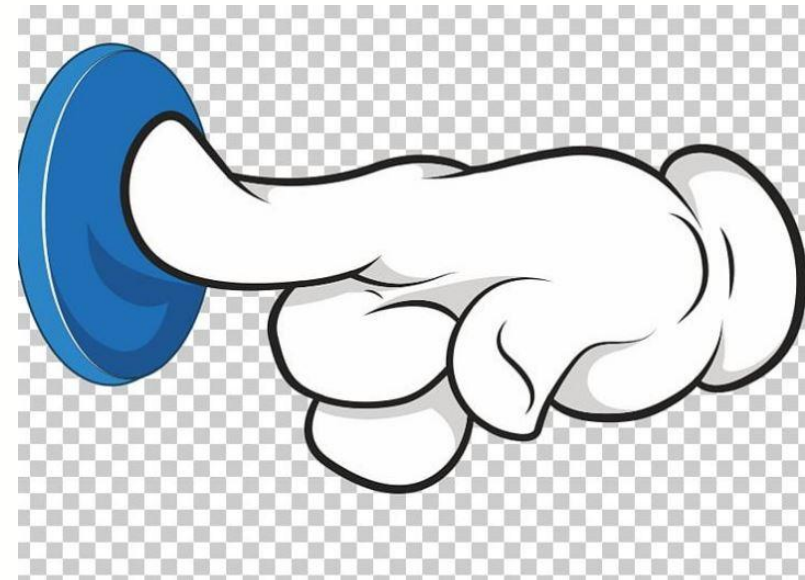


The non-linear fusion solution

Welding is Labor Intensive, time consuming, uncertainty of quality



Or Automation – one push of a button

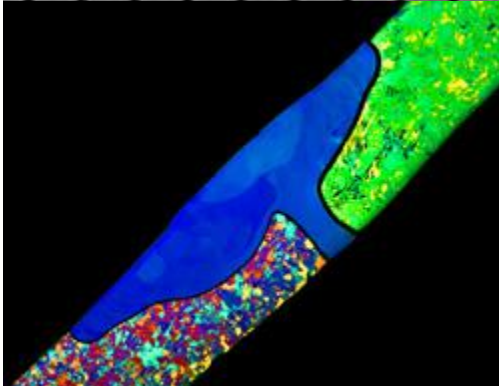
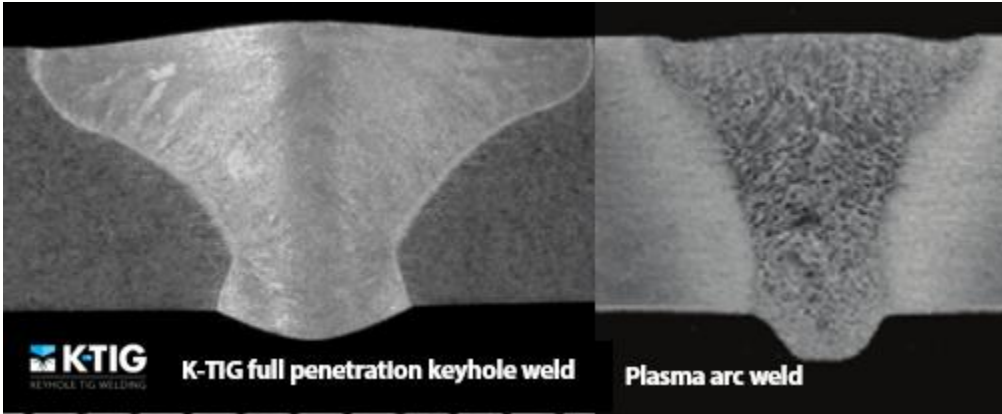


The *most* advanced welds in the world



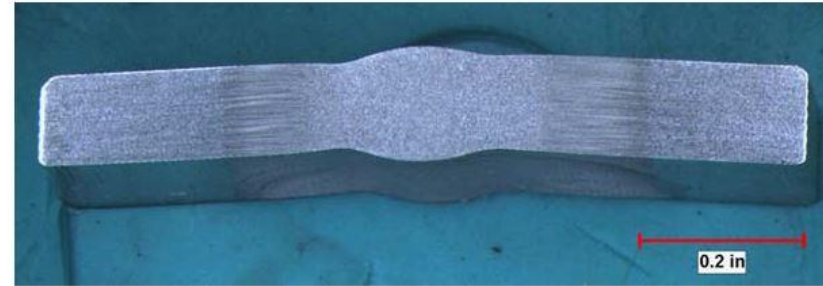
The non-linear fusion solution

Paul Cheng
Laboratory #: 803093-19



< Zirconium to
dissimilar material

No HAZ lines.
Note: Inside quality >



Sample 1: 5½" nom. OD x ⅛" Wall Thickness



What's in it for me?

Multiple Revenue Streams, income is global w/ deep moat for investment protection.



The non-linear fusion solution

Outsized Returns	License	Rental + per use	Low Volume / High Margin
Pipelines	X	X	
Refineries	X	X	
Nuclear Refurb, SMR	X	X	X Hot repairs, new builds
Shipbuilding	X	X	X
Submarines		X	X Tight confined space
Factories – autos, valves	X		



Paul Cheng – FuseRing. +1 519 709 2091, info@FuseRing.com

Dr. Adrian Gerlich – U of Waterloo, Canada

Solid State Fusion sample – Spinduction



NOVEMBER 19-21, 2019 // #POWERGEN19

