



Data/HIT and HCCN Leaders Peer Learning Teams Joint Session

Using HIT to Address Social Determinants of Health
January 17, 2023

Bureau of Primary Health Care (BPHC)

Vision: Healthy Communities, Healthy People



1



Which pic illustrates how you are feeling?

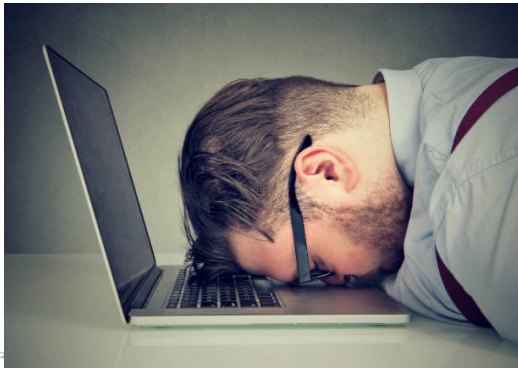
2



4



3



5



Data/HIT and HCCN Leaders PLTs

Using Health Information Technology to Address Social Determinants of Health (SDOH)

January 17, 2023

Joint Session



Team Announcements

- HCCN Leaders
- Data/HIT





Please note:

This session will be recorded and shared with learning team participants

Your Integrated Work Crew



**Catherine
Saar**



**Sarah
Linde**



**Mikayla
Branz**



**Ashley
Mills**

Peer Learning Keys to Success

Presence: Actively engage via video, audio, chat, other tools, and in small groups.

Respect: Bring an open mind to differences of opinion. Communicate thoughtfully. Make space.

Contribution: Share your thoughts and ideas as well as challenges and/or questions. Be willing to be vulnerable.

Confidentiality: Create a safe space for everyone to share openly.



Learning Objectives

- Participants will discuss how to assist Health Centers to leverage SDOH data to improve patient outcomes.
- Participants will share challenges, opportunities, and insights about this topic while forming and deepening relationships.



How We'll Get There...





Introductions

1) Come on Camera if you are.....

2) And, Chat Us

- Your Team (DHIT/HCCN or Both!)
- Organization
- Braggin' on SDOH progress!

Progress

1. Collecting complete, quality SDOH data
2. Getting EHR and population health tools to collect and integrate data
3. Supporting risk stratification and leveraging the data for clinical workflows
4. Closing referral loops



Challenge #1

- Collecting complete, quality data
 - How have HCs successfully collected “complete” SDOH data, especially when they are short-staffed and staff have multiple roles?
 - What tools/questionnaires are your HCs using (in particular, rural HCs)? How have you supported them to select a tool?
 - How have you gone about helping HCs to adapt the PRAPARE tool or other tools to meet the unique needs of their population?



Challenge #2

- Getting EHR and population health tools to collect and integrate data
 - How have you gone about successfully standardizing data?
 - Do you have success documenting ICD10 codes for SDOH?
 - How do you get health centers to understand that they need to map their SDOH data to a pop health tool so that they can evaluate their community needs?



Challenge #3

- Supporting risk stratification and leveraging the data for clinical workflows
 - How have you leveraged SDOH data to improve clinical workflows?
 - How have you leveraged SDOH data for risk stratification?
 - How do you use SDOH data as a decision-making tool, even when data may be missing?



Challenge #4

- Closing Referral Loops
 - What have you seen your HCs do to develop successful workflows when it comes to SDOH screening and follow up?
 - How are HCs successfully addressing the needs of people based on the SDOH screenings?
 - What are strategies for addressing SDOH in rural communities with fewer resources?





Movement Break

Go Deeper

- Data collection and quality
- Using data to inform clinical care plans and improve health equity
- Supporting risk stratification and care coordination
- Closing referral loops with community resources
- Advocating for payment and educating policymakers
- SDOH/HE Dashboards
- Patient Privacy and Cybersecurity



Choose Your Own Adventure

You can join the group that most interests you.

There is a breakout deck for notetaking.

Please identify a note taker.

Please identify a speaker for your group.

If you need assistance, use the help feature in your Zoom room.

We will do a high level share out when you return



Take notes here:

<https://tinyurl.com/8unxjvye>

Click on this now in the chat to open the doc!



Questions to Consider

- What strategies and tools are there to consider?
- What partnerships and resources can you tap to support you?
- What else did you discover today that could support your work?





“Break Out”



Large Group Sharing

THANK YOU

Content Slides



Content Slides





“Break Out”

Content Slides

1

2

3





Community: Your Resource and Sharing Tool





BPHC Data/HIT

Hidden Access

- Home
- Discussions
- Members
- Files
- Photos
- Videos
- Events
- Blog
- Message
- Invite
- Search
- Settings
- Team Admin

Team Information

The online collaboration and community space for the Data/HIT peer learning team. To join this group, you must be a Bureau of Primary Health Care grantee.

Team Admins

- Kate Shervais (Owner)
- Catherine Saar

Recent Topics

Filter Latest Post

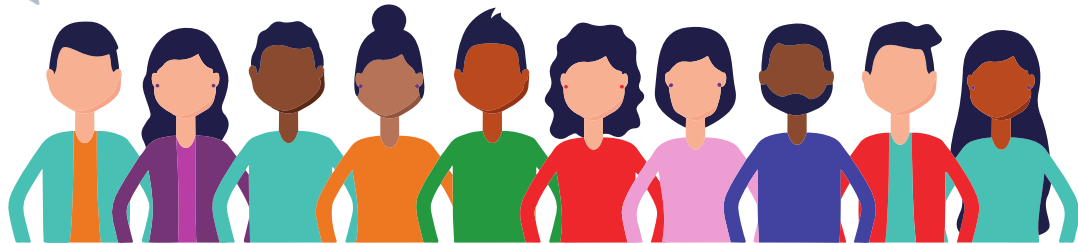
- NextGen - MedFusion**
Kyle Mertens Category Discussions 18d 4
- August Data/HIT PLT Notes are now posted**
Catherine Saar Category Summary Note Posting and Discussion Sep '20 1
- July Data/HIT PLT Summary Notes on Risk**
... Catherine Saar Category Summary Note Posting and Discussion Aug '20 1

<< < 2 3 4 5 > >>

Team Activity Feed

- Nadia Ali joined the group BPHC Data/HIT
Oct 29 at 11:53am CDT
- Kyle Mertens posted NextGen - MedFusion in BPHC Data/HIT 's forums in Discussions
Oct 15 at 1:56pm CDT
- Catherine Saar posted August Data/HIT PLT Notes are now posted in BPHC Data/HIT 's forums in Summary Note Posting and Discussion
Sep 8 at 11:59pm CDT

Place Community link here



Poll via Poll Everywhere

Text IW POLL to 22333





Movement Break





Movement Break

Movement Break



Agenda

▶ Agenda item one

▶ Agenda item two

▶ Agenda item three

▶ Agenda item four



■ Divider Headline



Text and content 1, single column

- **Bullets level one, one column template**
 - Level two
 - Level three has bullets, by default
- **Bullets level one, one column template**
 - Level two
 - Level three has bullets, by default



Two column

▶ Bullets level one

- Level two is body copy
 - Level three has bullets, by default

• Bullets level one

- Level two is body copy
 - Level three has bullets, by default

2 column content with picture template



Text



Text

Questions



Contact Us

NAME: Email

NAME: Email

