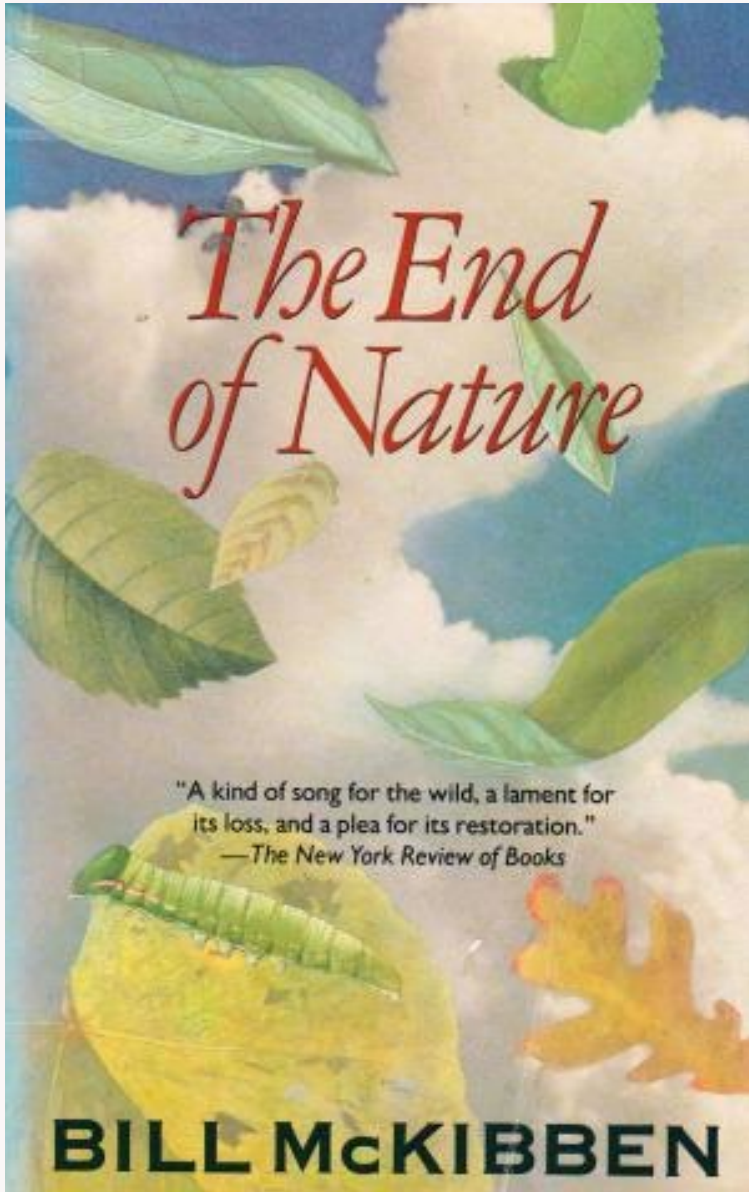




Forests for Climate Action & Justice

May 14, 2022



What Drives Us



Climate Change



Social Equity



What Drives Us

Climate Change

Trees and, more broadly, forests are the best nature-based solution to climate change, given how much carbon they capture and store.

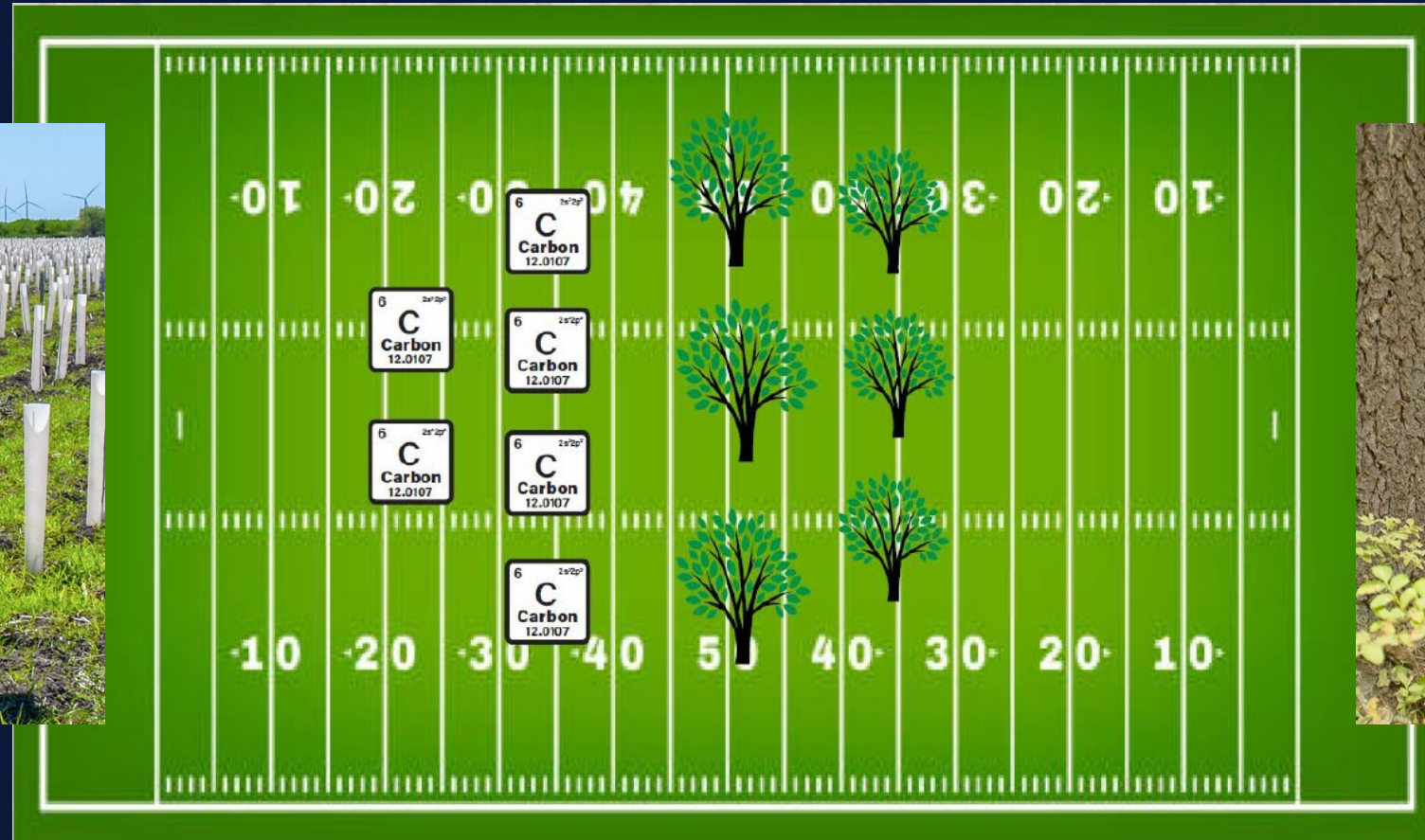


16%

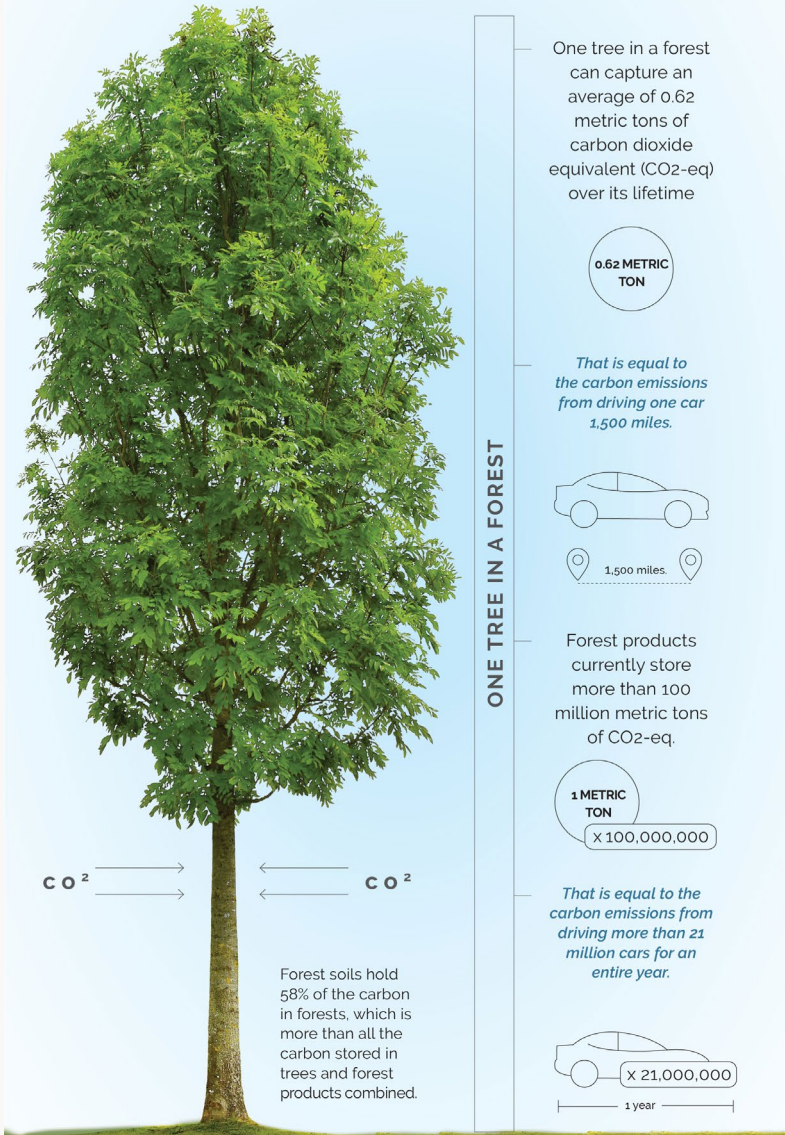
Forests and forest products capture and store almost 16 percent of the United States' carbon emissions from burning fossil fuels.



We Need Carbon Offense + Defense



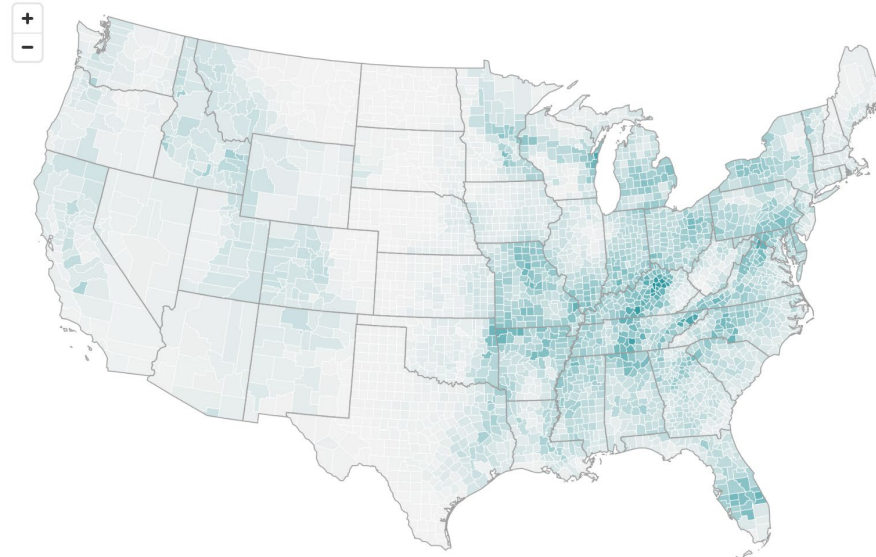
More of Right Trees in Right Places = More Natural Carbon Capture...



REFORESTATION HUB

[About](#) [FAQ](#)

Select a state



There are up to 133 million acres of opportunity in the United States to restore forest cover for climate mitigation.

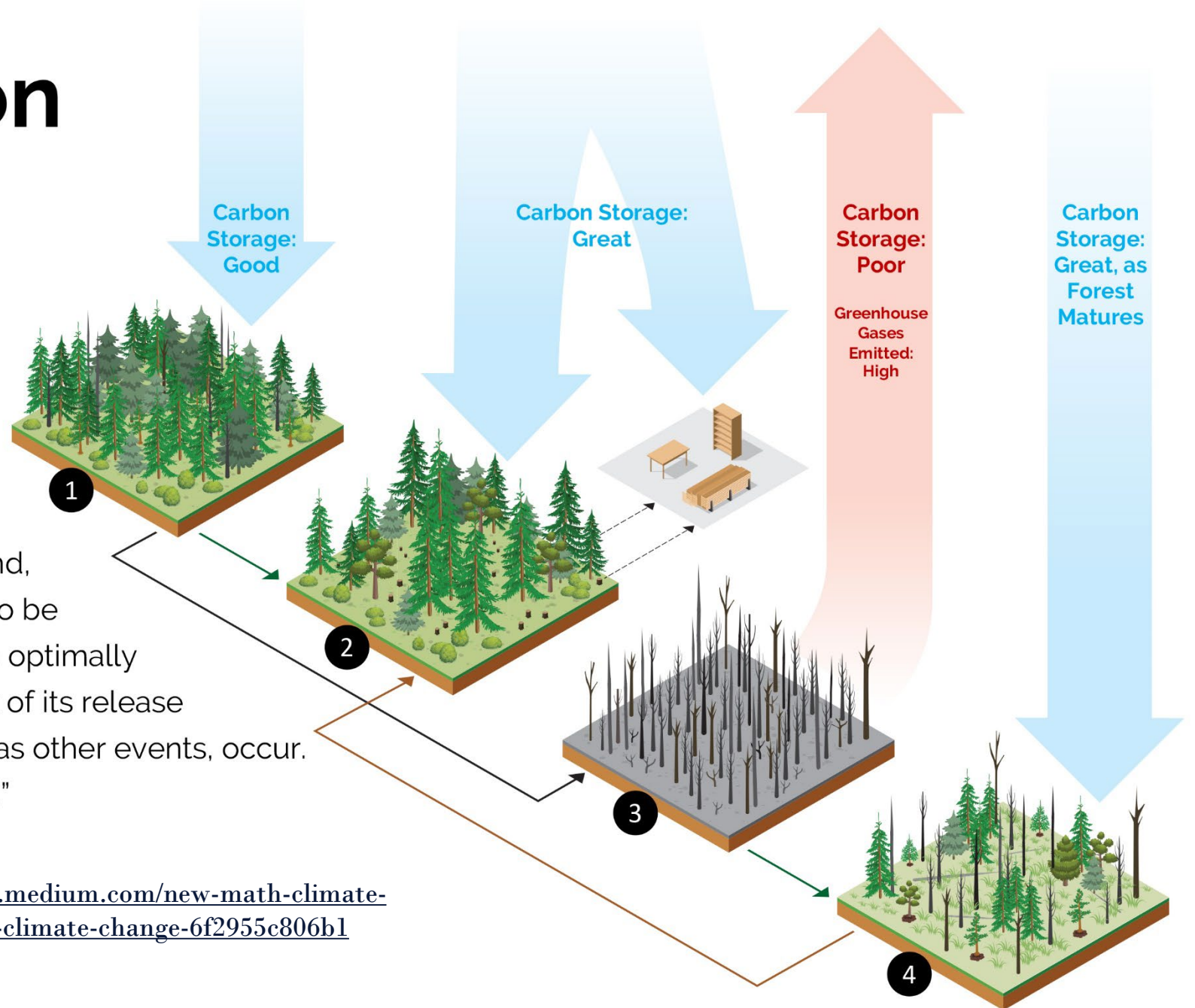
Reforesting these areas with approximately 68 billion trees could capture 333 million tonnes of CO₂ per year, equivalent to removing 72 million cars from the road.

Low High
Total Opportunity Acres
Scale by county area

<https://www.reforestationhub.org/>

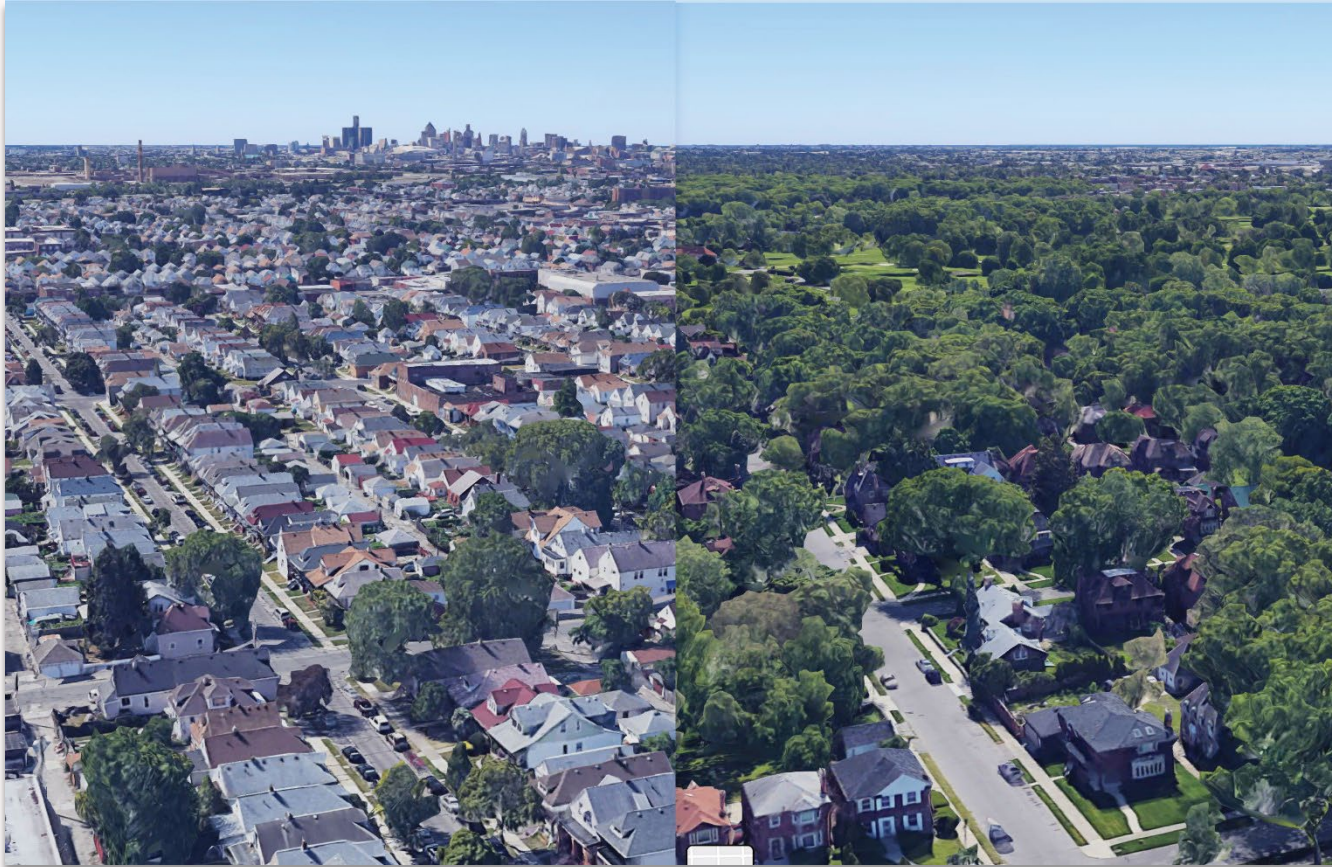
Playing Carbon Defense

Trees are gaining momentum as a climate change solution, given the role they play in capturing carbon. This is often done by planting trees, which American Forests refers to as playing “carbon offense.” But forests release carbon if they are not cared for and, as a result, degrade. These forests need to be actively managed or restored so they can optimally capture and store carbon, limiting the risk of its release when large and intense wildfires, as well as other events, occur. This is known as playing “carbon defense.”



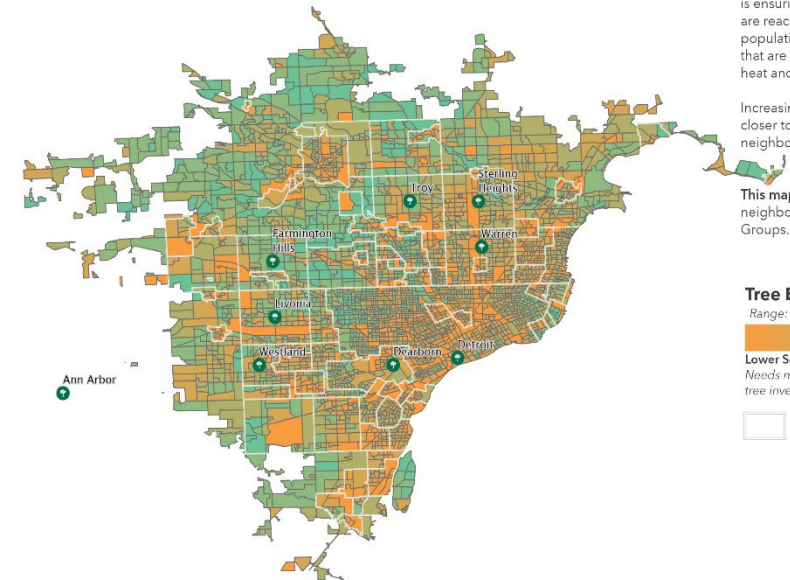
<https://americanforests.medium.com/new-math-climate-change-more-fire-more-climate-change-6f2955c806b1>

We Need Tree Equity for Climate Action + Justice



Tree Equity Score Greater Detroit

Detroit, MI Urbanized Area



Tree Equity Score is a way to measure how well a neighborhood, municipality or region is ensuring the benefits of urban tree canopy are reaching low income communities, populations of color and other populations that are particularly susceptible to extreme heat and other climate-related conditions.

Increasing your score means you're getting closer to creating Tree Equity in your neighborhood and Municipality.

This map highlights Tree Equity Scores by neighborhood, defined as Census Block Groups.

Tree Equity Score

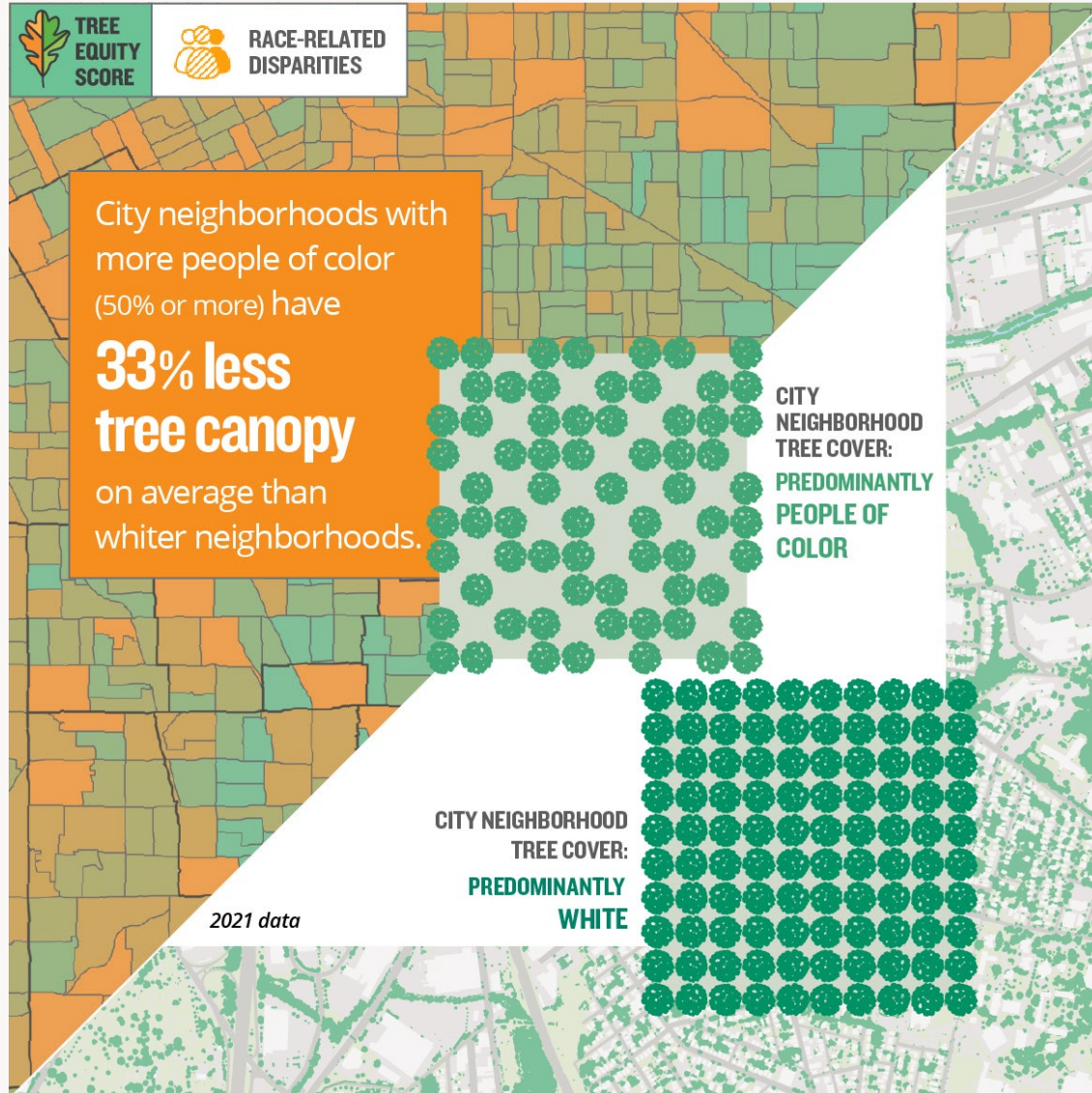
Range: 0 - 100

Lower Score
Needs more
tree investment

Higher Score
Less investment
in trees needed

 Incorporated Places

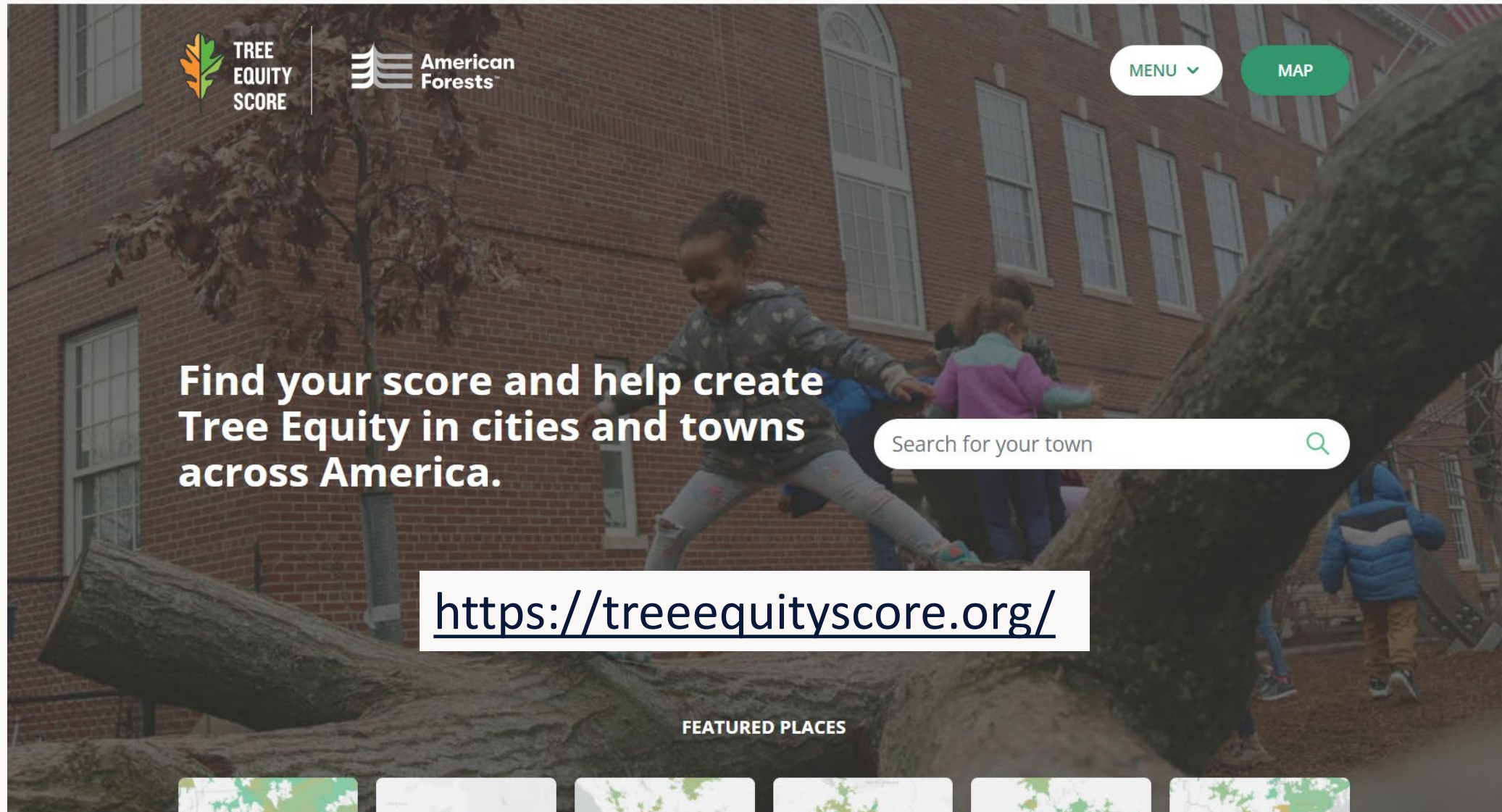




Sparse tree cover in underserved communities kills thousands every year.

In the United States, 12,000 people a year die from extreme heat—a number that is predicted to increase to 100,000 this century.

**SUPPORT THE INFRASTRUCTURE
& RECONCILIATION BILLS**



The banner features a background image of children playing on a large tree trunk in an urban setting. The top left contains the 'TREE EQUITY SCORE' logo (a stylized leaf) and the 'American Forests' logo. The top right has 'MENU' and 'MAP' buttons. The center text reads 'Find your score and help create Tree Equity in cities and towns across America.' Below this is a search bar with the placeholder text 'Search for your town' and a magnifying glass icon. At the bottom, a section titled 'FEATURED PLACES' displays six small map thumbnails showing various urban areas with green and yellow highlights.

TREE EQUITY SCORE

American Forests™

MENU ▾

MAP

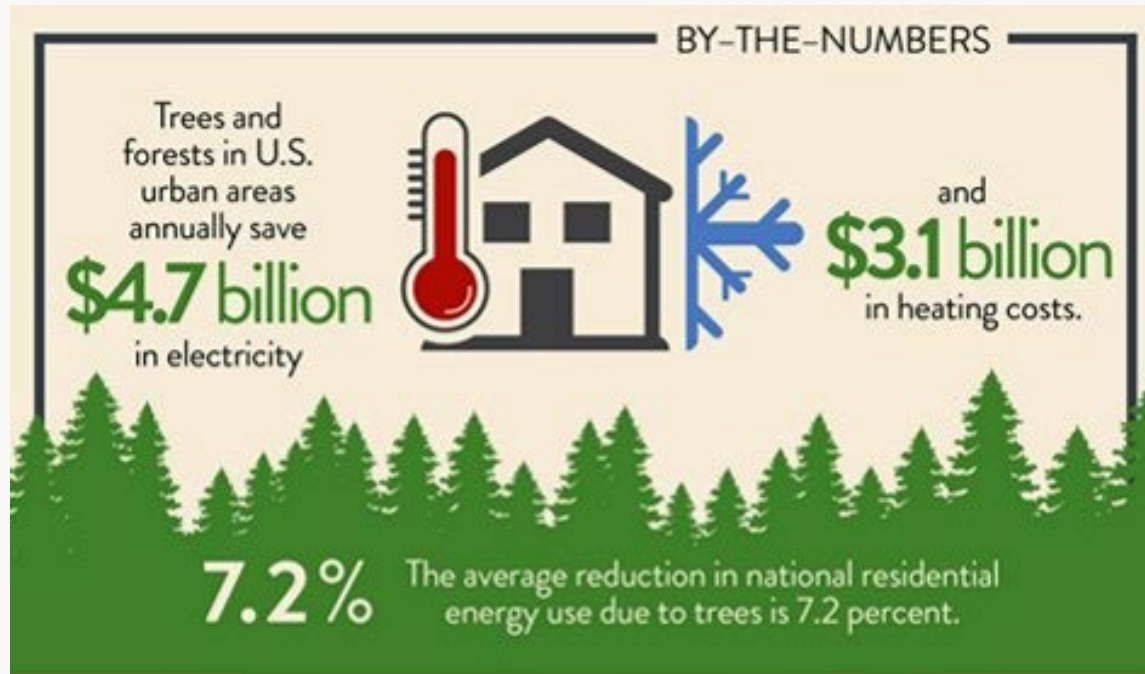
Find your score and help create Tree Equity in cities and towns across America.

Search for your town 🔍

<https://treeequityscore.org/>

FEATURED PLACES

Tree Equity = Climate Action Squared



Forest Service
Research and Development

Highlights from the World Leader in Forestry Research


**Urban Trees Capture
~ 130 MMt/CO₂e/YR!**

Tree Equity = Equitable Economic Opportunity

25.7 Jobs per \$1M Invested

VIBRANT CITIES LAB

RESEARCH, CASE STUDIES, GUIDES | URBAN FORESTRY TOOLKIT | RESOURCES | LOGIN

 Career Pathways Action Guide

Achieve Tree Equity through urban forestry jobs training.

GET STARTED →

<https://www.vibrantcitieslab.com/guides/career-pathways-action-guide/>

PHASE:

I | II | III | IV | V →



Career Pathways Pilot Program in Chicago, IL

Bipartisan Support for Trees as a Climate Solution in Large Landscapes and Urban Communities

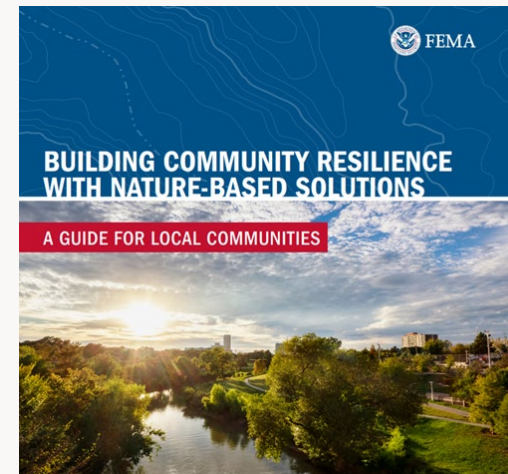
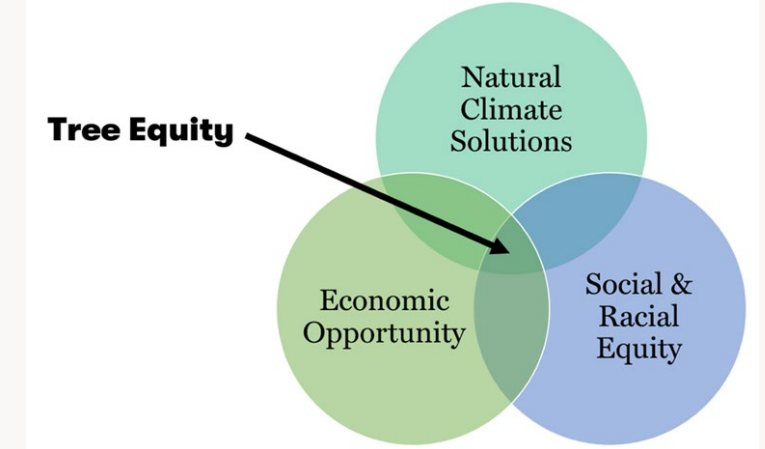


Integrating Tree Equity Across Federal Agencies

Justice40 Initiative

Interagency Working Group on Extreme Heat

USDA Forest Service, US Dept of Transportation, EPA, HUD, HHS, FEMA, NOAA, and more



New DOT Healthy Streets = Tree Equity for Active Transit





The TREES act would increase tree canopy in underserved communities.

The TREES Act of 2021 would
result in 300,000 more
trees planted annually,
particularly in the
many underserved
communities of
the United
States where
trees are
sparse.



AMERICAN FORESTS
- SINCE 1875 -



[https://www.americanforests.org/
take-action/trees-act/](https://www.americanforests.org/take-action/trees-act/)



The infrastructure
package allocates
\$2.5 billion for
post-fire restoration.



American
Forests™



Partner with Private Landowners:

Rural Forest Markets Act

Growing Climate Solutions Act



Join the movement.

Anyone, anywhere can make a difference.

 1t.org | us